



47 Elm View | Pickering YO18 7EF

A two bedroom semi detached bungalow situated on the Eastern side of Pickering enjoying a pleasant position in this popular residential area together with front and rear garden and long driveway which provides good parking.

The accommodation which

now requires some updating comprises kitchen, sitting room, inner hallway, two bedrooms and bathroom and enjoys the benefit of gas central heating.

NO ONWARD CHAIN.



Guide Price £180,000

47 Elm View | Pickering



Entrance door leads to:

KITCHEN

13'9" x 7'1" (4.19m x 2.16m)

With wall and floor units comprising single drainer stainless steel sink unit with mixer tap over, roll top work surfaces, splash-backs; plumbing for automatic washing machine, wall mounted gas fired central heating boiler, double glazed window to the front and side elevations. Radiator.

SITTING ROOM

10'6" to 9'1" minimum x 17'7" (3.20m to 2.77m minimum x 5.36m)

With wall mounted gas fire with brick surround and wooden mantle; double glazed window to front elevation, ceiling coving, radiator.

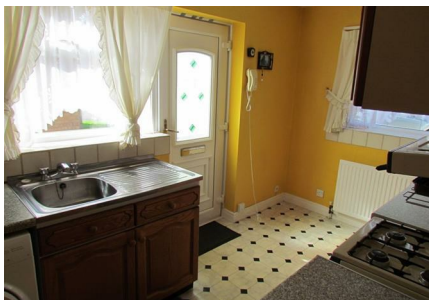
INNER HALLWAY

With airing cupboard housing hot water cylinder with shelving.

BEDROOM ONE

11'9" x 9'0" (3.58m x 2.74m)

Radiator and double glazed window to the rear overlooking the garden.





BEDROOM TWO

8'11" x 8'8" (2.72m x 2.64m)

Radiator and double glazed window to the rear overlooking garden.

BATHROOM

Comprising panelled bath with shower unit over, pedestal wash hand basin and low flush w.c. Partial wall tiling, double glazed window. Radiator.

OUTSIDE

To the front there is a low maintenance garden with flower/shrubbery beds, a long driveway to the side which provides parking and access to the rear garden which is paved with GREENHOUSE, SHED and fenced boundaries.

SERVICES

Gas, electricity, water and drainage are connected to the property.

DIRECTIONS

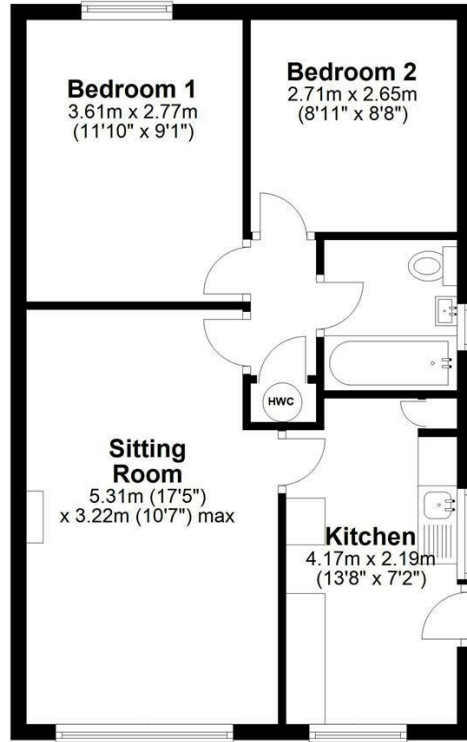
From our Pickering Office head eastwards towards Scarborough along the A170, take the first turn on the left onto Hawthorn Lane, then first right onto Forest Road. Take first right onto Birch View and Elm View is at the end of Birch View.



47 Elm View | Pickering

Ground Floor

Approx. 49.7 sq. metres (535.3 sq. feet)



Total area: approx. 49.7 sq. metres (535.3 sq. feet)
47 Elm View, Pickering

VIEWING

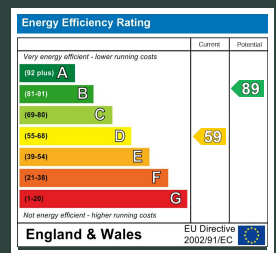
By appointment with the Agents, Pickering Office. Tel: 01751 472724

COUNCIL TAX BAND

C

ENERGY PERFORMANCE RATING

D



St Georges House 39 Market Place, Pickering, YO18 7AE
 t: 01751 472724
 e: pickering@boultoncooper.co.uk

boultoncooper.co.uk



CONSUMER PROTECTION FROM UNFAIR TRADING REGULATIONS 2008

The description contained in this brochure is intended only to give a general impression of the property, its location and features, in order to help you to decide whether you wish to look at it. We do our very best to provide accurate information but we are human, so you should not allow any decisions to be influenced by it. For example any measurements are approximate and, where such things as central heating, plumbing, wiring or mains services are mentioned, we would advise you to take your own steps to check their existence and condition. Although we cannot accept any responsibility for any inferences drawn from this brochure or any inaccuracy in it, we shall always try to help you with any queries.

BoultonCooper for themselves and for the vendors or lessors of the property/properties, whose agents they are, give notice that (i) the particulars are produced in good faith, are set out as a general guide only and do not constitute any part of the contract; (ii) no person in the employment of BoultonCooper has any authority to make or give representation or warranty whatever in relation to this/these property/properties.

BC
 Est. 1801